

Specimen Report: VS220419-0120

Summary

Region	TCS	TCS with A3G/F hypermutation	TCS with stop codon	TCS w/o hypermutation and stop codon	Poisson cutoff for minority mutation (>=)	Pi	Dist20
IN	7196	5	8	7183	6	0.0400	0.0000
PR	9071	5	17	9052	6	0.0400	0.0000
RT	1359	0	26	1333	3	0.1200	0.0000
V1V3	1264	NA	NA	NA	NA	0.1000	0.0000

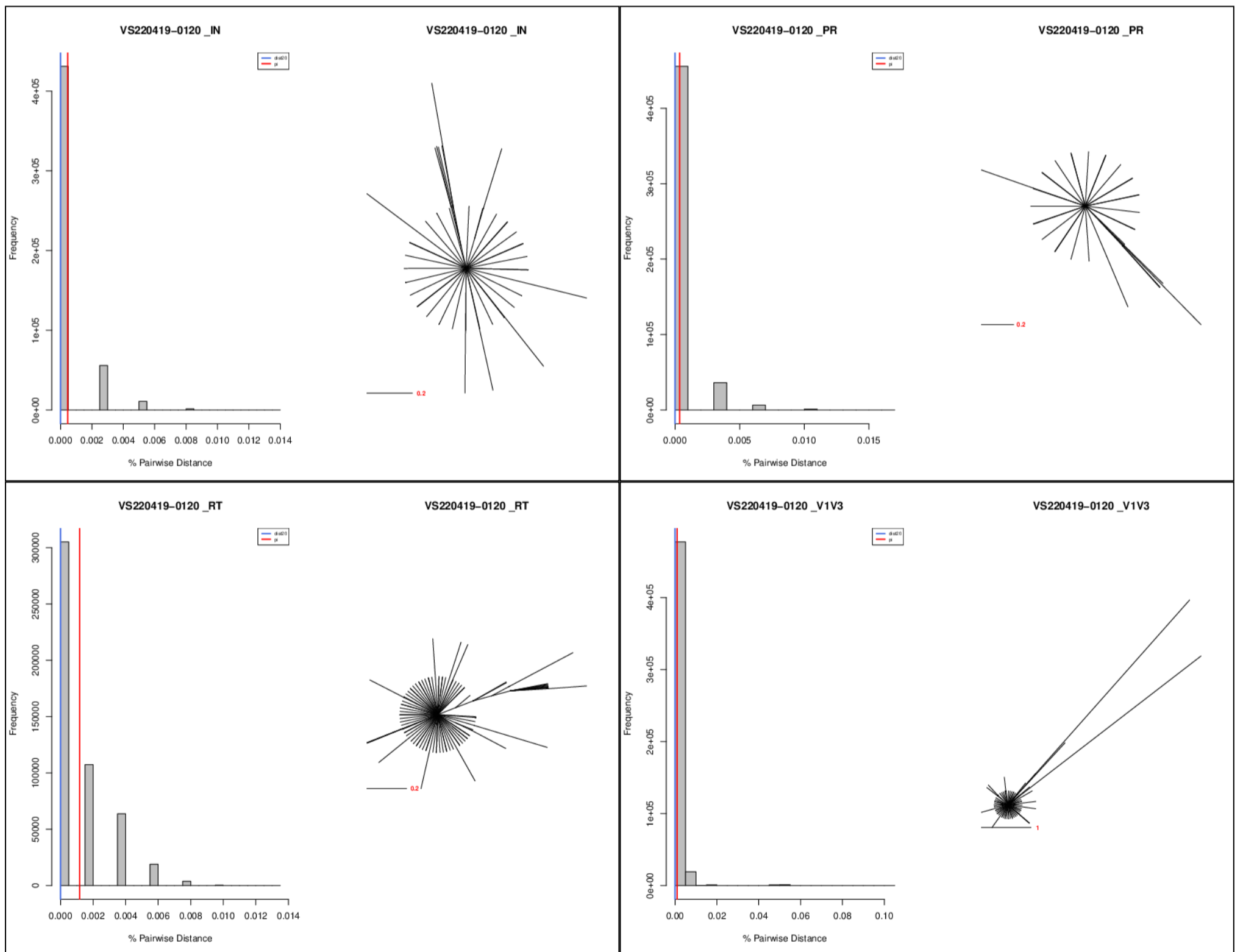
SDRM

region	TCS	AA position	wild type	mutation	number	percentage	95% CI low	95% CI high	notes
IN	7183	66	T	I	1	0.0140	0.0000	0.0780	*
IN	7183	97	T	A	2	0.0280	0.0030	0.1010	*
IN	7183	143	Y	C	1	0.0140	0.0000	0.0780	*
IN	7183	148	Q	H	1	0.0140	0.0000	0.0780	*
IN	7183	148	Q	R	1	0.0140	0.0000	0.0780	*
NNRTI	1333	190	G	E	1	0.0750	0.0020	0.4170	*
NRTI	1333	75	V	A	1	0.0750	0.0020	0.4170	*
PR	9052	30	D	N	5	0.0550	0.0180	0.1290	*
PR	9052	46	M	V	1	0.0110	0.0000	0.0620	*
PR	9052	46	M	I	6	0.0660	0.0240	0.1440	
PR	9052	46	M	L	3	0.0330	0.0070	0.0970	*
PR	9052	54	I	L	1	0.0110	0.0000	0.0620	*
PR	9052	73	G	S	1	0.0110	0.0000	0.0620	*
PR	9052	83	N	D	2	0.0220	0.0030	0.0800	*
PR	9052	84	I	V	1	0.0110	0.0000	0.0620	*
PR	9052	85	I	V	3	0.0330	0.0070	0.0970	*
PR	9052	88	N	S	4	0.0440	0.0120	0.1130	*

Mutation Linkage

region	TCS	mutation linkage	number	percentage	95% CI low	95% CI high	notes
IN	7183	WT	7177	99.9160	99.8180	99.9690	
IN	7183	T97A	2	0.0280	0.0030	0.1010	*
IN	7183	Y143C	1	0.0140	0.0000	0.0780	*
IN	7183	T66I	1	0.0140	0.0000	0.0780	*
IN	7183	Q148R	1	0.0140	0.0000	0.0780	*
IN	7183	Q148H	1	0.0140	0.0000	0.0780	*
PR	9052	WT	9025	99.7020	99.5660	99.8030	
PR	9052	M46I	6	0.0660	0.0240	0.1440	

region	TCS	mutation linkage	number	percentage	95% CI low	95% CI high	notes
PR	9052	D30N	5	0.0550	0.0180	0.1290	*
PR	9052	N88S	4	0.0440	0.0120	0.1130	*
PR	9052	M46L	3	0.0330	0.0070	0.0970	*
PR	9052	I85V	3	0.0330	0.0070	0.0970	*
PR	9052	N83D	2	0.0220	0.0030	0.0800	*
PR	9052	I54L	1	0.0110	0.0000	0.0620	*
PR	9052	M46V	1	0.0110	0.0000	0.0620	*
PR	9052	G73S	1	0.0110	0.0000	0.0620	*
PR	9052	I84V	1	0.0110	0.0000	0.0620	*
RT	1333	WT	1331	99.8500	99.4590	99.9820	
RT	1333	V75A	1	0.0750	0.0020	0.4170	*
RT	1333	G190E	1	0.0750	0.0020	0.4170	*



This web app was established with support from the National Institutes of Health and UNC Information Technology Services.